

\$485,000 - 809 Cherry Close, Beaverlodge

MLS® #A2237300

\$485,000

4 Bedroom, 2.00 Bathroom, 1,355 sqft
Residential on 0.19 Acres

N/A, Beaverlodge, Alberta

Welcome to this beautifully updated bungalow nestled in a quiet cul-de-sac in the heart of Beaverlodge. This fully finished home offers 4 bedrooms and 2 full bathrooms, all ready for the new family!

Enjoy the comfort and functionality of a walk-out basement, offering easy access to the backyard and loads of natural light. The spacious double car garage provides ample room for parking, storage, or a workshop.

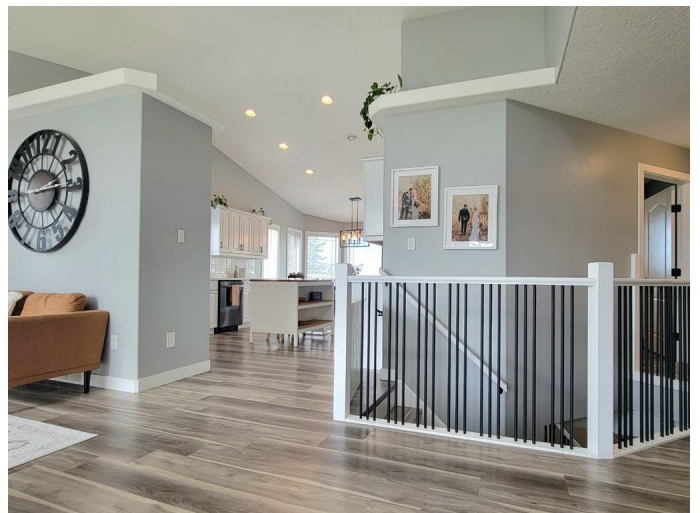
Recently fully renovated, this home blends modern upgrades with classic charm. Whether you're relaxing on the main floor or entertaining in the bright lower level, there's room for everyone to enjoy.

Situated in a family-friendly neighborhood with minimal traffic, this gem won't last long! Schedule your private showing today!

Built in 2003

Essential Information

MLS® #	A2237300
Price	\$485,000
Bedrooms	4
Bathrooms	2.00
Full Baths	2
Square Footage	1,355
Acres	0.19
Year Built	2003



Type	Residential
Sub-Type	Detached
Style	Bungalow
Status	Active

Community Information

Address	809 Cherry Close
Subdivision	N/A
City	Beaverlodge
County	Grande Prairie No. 1, County of
Province	Alberta
Postal Code	T0H 0C0

Amenities

Parking Spaces	2
Parking	Double Garage Attached
# of Garages	2

Interior

Interior Features	See Remarks
Appliances	Dishwasher, Refrigerator, Stove(s), Washer/Dryer
Heating	In Floor, Forced Air
Cooling	None
Fireplace	Yes
# of Fireplaces	1
Fireplaces	Gas, Living Room
Has Basement	Yes
Basement	Finished, Full, Walk-Out

Exterior

Exterior Features	Private Yard
Lot Description	Cul-De-Sac
Roof	Asphalt Shingle
Construction	Vinyl Siding
Foundation	Poured Concrete

Additional Information

Date Listed	July 4th, 2025
Days on Market	17

Zoning R-1

Listing Details

Listing Office Grassroots Realty Group Ltd.

Data is supplied by Pillar 9â,,ç MLSÂ® System. Pillar 9â,,ç is the owner of the copyright in its MLSÂ® System. Data is deemed reliable but is not guaranteed accurate by Pillar 9â,,ç. The trademarks MLSÂ®, Multiple Listing ServiceÂ® and the associated logos are owned by The Canadian Real Estate Association (CREA) and identify the quality of services provided by real estate professionals who are members of CREA. Used under license.