

\$4,065,000 - Ne 36-49-23-3, Rural

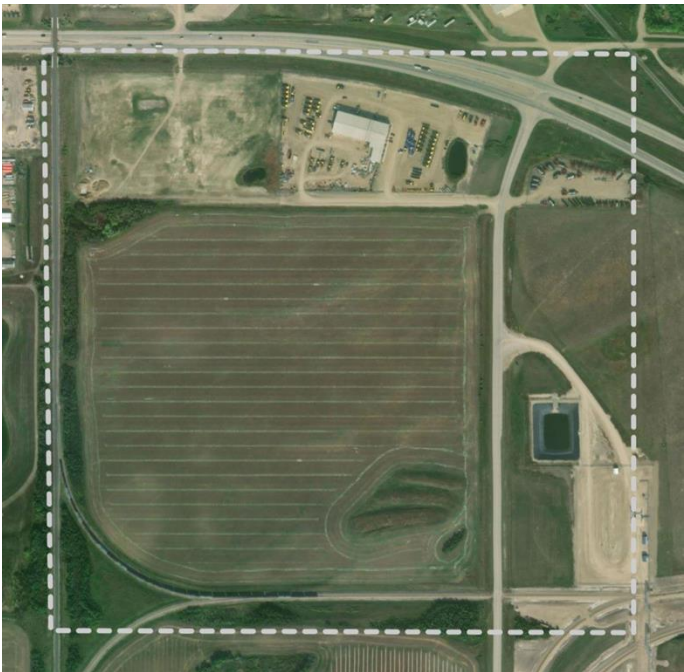
MLS® #A2234123

\$4,065,000

0 Bedroom, 0.00 Bathroom,
Commercial on 12.95 Acres

NONE, Rural, Saskatchewan

Highway exposure parcel of 12.95 a c r e s
east of the train overpass.
Overburden has been removed and ready for
development. Bonus to this
property is a telecommunication tower that
brings in an excellent revenue
stream.



Essential Information

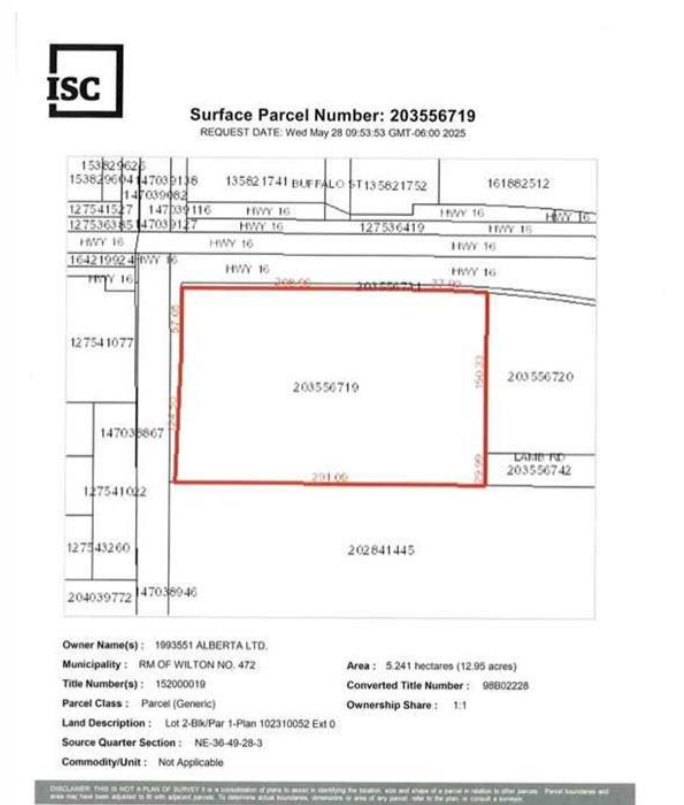
MLS® #	A2234123
Price	\$4,065,000
Bathrooms	0.00
Acres	12.95
Type	Commercial
Sub-Type	Industrial
Status	Active

Community Information

Address	Ne 36-49-23-3
Subdivision	NONE
City	Rural
County	Saskatchewan
Province	Saskatchewan
Postal Code	S9V 2T3

Additional Information

Date Listed	June 24th, 2025
Days on Market	19
Zoning	C



Listing Details

Listing Office RE/MAX OF LLOYDMINSTER

Data is supplied by Pillar 9â„¢ MLS® System. Pillar 9â„¢ is the owner of the copyright in its MLS® System. Data is deemed reliable but is not guaranteed accurate by Pillar 9â„¢. The trademarks MLS®, Multiple Listing Service® and the associated logos are owned by The Canadian Real Estate Association (CREA) and identify the quality of services provided by real estate professionals who are members of CREA. Used under license.