

\$210,000 - Block A Ne 15-50-26-3, Rural

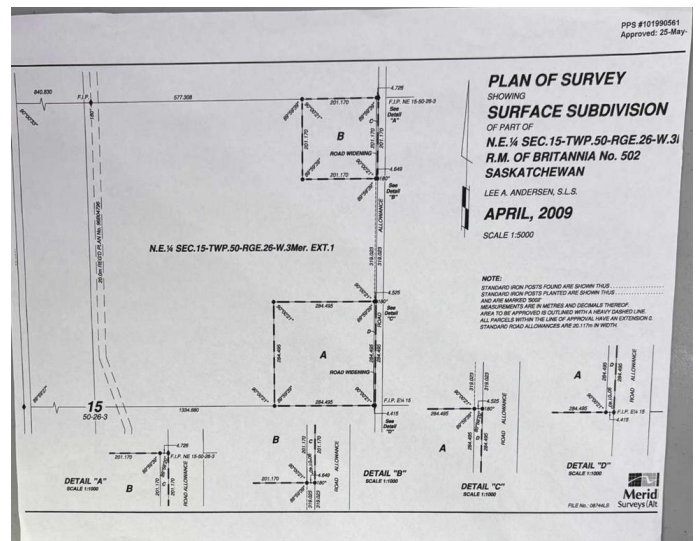
MLS® #A2233882

\$210,000

0 Bedroom, 0.00 Bathroom,
Land on 19.68 Acres

NONE, Rural, Saskatchewan

What a beautiful spot to build your country home! Situated just 10 miles east of Lloydminster in the RM of Britannia, this 19.68-acre parcel is ready for the next stage of development with well, power, driveway, and fencing already in place. Scenic hillside location overlooking your own private beaver pond. Don't hesitate, have a look at it today! Marshall school attendance area. GST applies. Directions: East on Highway #303 to Range Road 3262, then north 3 ½ miles, west side of road.



Essential Information

| | |
|-----------|------------------|
| MLS® # | A2233882 |
| Price | \$210,000 |
| Bathrooms | 0.00 |
| Acres | 19.68 |
| Type | Land |
| Sub-Type | Residential Land |
| Status | Active |

Community Information

| | |
|-------------|-----------------------|
| Address | Block A Ne 15-50-26-3 |
| Subdivision | NONE |
| City | Rural |
| County | Saskatchewan |
| Province | Saskatchewan |
| Postal Code | S0M 2G0 |

Additional Information

| | |
|----------------|-----------------|
| Date Listed | June 23rd, 2025 |
| Days on Market | 13 |
| Zoning | CR1 |

Listing Details

| | |
|----------------|------------------------|
| Listing Office | RE/MAX OF LLOYDMINSTER |
|----------------|------------------------|

Data is supplied by Pillar 9â„¢ MLS® System. Pillar 9â„¢ is the owner of the copyright in its MLS® System. Data is deemed reliable but is not guaranteed accurate by Pillar 9â„¢. The trademarks MLS®, Multiple Listing Service® and the associated logos are owned by The Canadian Real Estate Association (CREA) and identify the quality of services provided by real estate professionals who are members of CREA. Used under license.