

# \$199,900 - 6 Northlands Lane Ne, Medicine Hat

MLS® #A2232214

**\$199,900**

2 Bedroom, 1.00 Bathroom, 680 sqft

Residential on 0.00 Acres

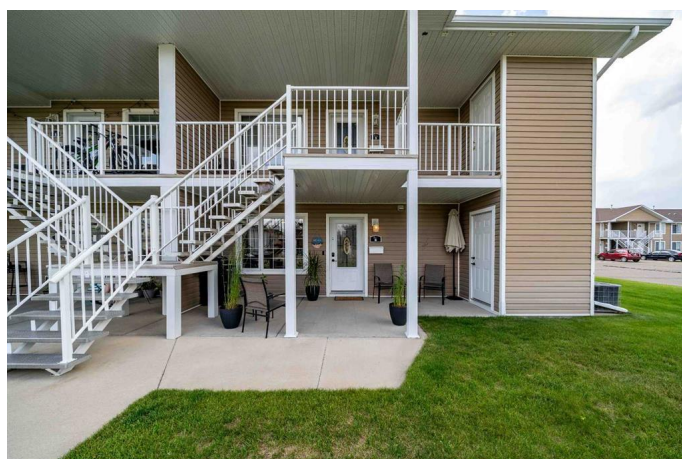
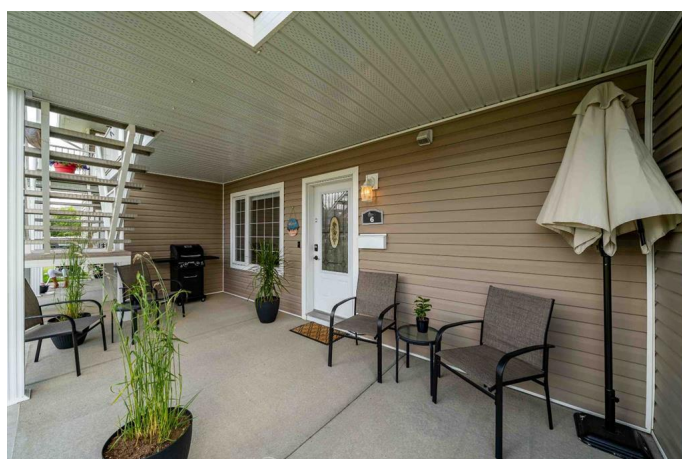
Northeast Crescent Heights, Medicine Hat, Alberta

This beautifully updated ground-level 2-bedroom unit offers true bungalow living in a well-managed complex with affordable condo fees. Step inside to a bright, modern space featuring brand-new stainless steel appliances, a renovated kitchen with white cabinetry, tile backsplash, under-cabinet lighting, and an RO system, garburator and built in soap dispenser. The open floor plan is perfect for low-maintenance living, with new paint throughout, upgraded LED lighting with adjustable tone, and stylish custom window coverings, including motorized blinds in the living room.

Enjoy the convenience of in-suite laundry with a brand-new full-size stacking washer/dryer, plus a new hot water tank (2022) and Ring doorbell for added peace of mind. The layout includes two comfortable bedrooms, with the primary offering direct access to the updated 4pc bath.

Relax on your front patio overlooking green space, with extra storage just steps away and one assigned parking stall plus ample guest parking nearby.

Whether you're looking to downsize, buy your first home, or add to your rental portfolio, this turn-key unit is move-in ready and shines with pride of ownership!



Built in 2006

### Essential Information

|                |               |
|----------------|---------------|
| MLS® #         | A2232214      |
| Price          | \$199,900     |
| Bedrooms       | 2             |
| Bathrooms      | 1.00          |
| Full Baths     | 1             |
| Square Footage | 680           |
| Acres          | 0.00          |
| Year Built     | 2006          |
| Type           | Residential   |
| Sub-Type       | Row/Townhouse |
| Style          | Bungalow      |
| Status         | Active        |

### Community Information

|             |                            |
|-------------|----------------------------|
| Address     | 6 Northlands Lane Ne       |
| Subdivision | Northeast Crescent Heights |
| City        | Medicine Hat               |
| County      | Medicine Hat               |
| Province    | Alberta                    |
| Postal Code | T1C0A8                     |

### Amenities

|                |         |
|----------------|---------|
| Amenities      | Storage |
| Parking Spaces | 1       |
| Parking        | Stall   |

### Interior

|                   |   |
|-------------------|---|
| Interior Features | Granite Counters, No Smoking Home, See Remarks  |
| Appliances        | Central Air Conditioner, Dishwasher, Garburator, Microwave Hood Fan, Refrigerator, Stove(s), Washer/Dryer, Washer/Dryer Stacked, Window Coverings |
| Heating           | Forced Air  |
| Cooling           | Central Air   |
| # of Stories      | 2   |
| Basement          | None  |

### Exterior

|                   |                          |
|-------------------|--------------------------|
| Exterior Features | Other                    |
| Lot Description   | See Remarks              |
| Roof              | Asphalt                  |
| Construction      | Vinyl Siding, Wood Frame |
| Foundation        | Poured Concrete          |

**Additional Information**

|                |                 |
|----------------|-----------------|
| Date Listed    | June 18th, 2025 |
| Days on Market | 5               |
| Zoning         | R-MD            |

**Listing Details**

|                |                               |
|----------------|-------------------------------|
| Listing Office | ROYAL LEPAGE COMMUNITY REALTY |
|----------------|-------------------------------|

Data is supplied by Pillar 9â„¢ MLS® System. Pillar 9â„¢ is the owner of the copyright in its MLS® System. Data is deemed reliable but is not guaranteed accurate by Pillar 9â„¢. The trademarks MLS®, Multiple Listing Service® and the associated logos are owned by The Canadian Real Estate Association (CREA) and identify the quality of services provided by real estate professionals who are members of CREA. Used under license.