

\$200,000 - North Of 120 Ave East Of 80 Ave, Peace River

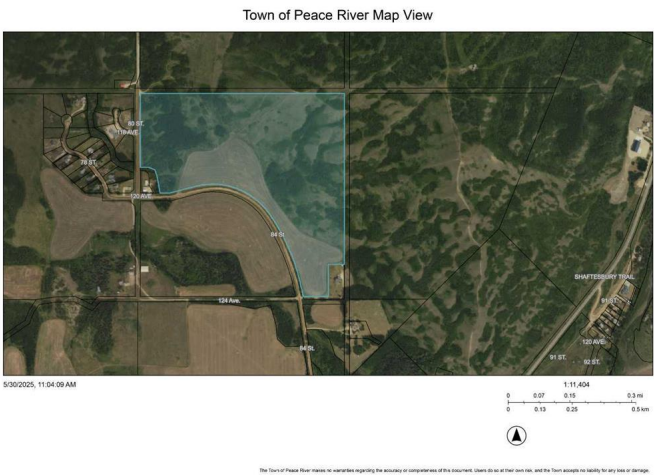
MLS® #A2226502

\$200,000

0 Bedroom, 0.00 Bathroom,
Land on 94.69 Acres

Saddleback Ridge, Peace River, Alberta

94+ acres of land within Town of Peace River limits with approximately 24 acres that can potentially be developed - currently used as farmland this land has a huge upside. Bordering a gravel road with frontage along this road allowing easy access for future roads and housing. Zoned residential this parcel is just waiting for the right project - the balance of the land has walking trails and close proximity to the top of Misery Mountain a favorite local hiking spot.



Essential Information

MLS® #	A2226502
Price	\$200,000
Bathrooms	0.00
Acres	94.69
Type	Land
Sub-Type	Residential Land
Status	Active

Community Information

Address	North Of 120 Ave East Of 80 Ave
Subdivision	Saddleback Ridge
City	Peace River
County	Peace No. 135, M.D. of
Province	Alberta
Postal Code	T8S1S4

Additional Information

Date Listed	May 28th, 2025
Days on Market	21
Zoning	R

Listing Details

Listing Office	Century 21 Town and Country Realty
----------------	------------------------------------

Data is supplied by Pillar 9â„¢ MLS® System. Pillar 9â„¢ is the owner of the copyright in its MLS® System. Data is deemed reliable but is not guaranteed accurate by Pillar 9â„¢. The trademarks MLS®, Multiple Listing Service® and the associated logos are owned by The Canadian Real Estate Association (CREA) and identify the quality of services provided by real estate professionals who are members of CREA. Used under license.