

\$1 - 272256 Dickson Stevenson Trail Ne, Airdrie

MLS® #A2218751

\$1

0 Bedroom, 0.00 Bathroom,
Land on 147.00 Acres

NONE, Airdrie, Alberta

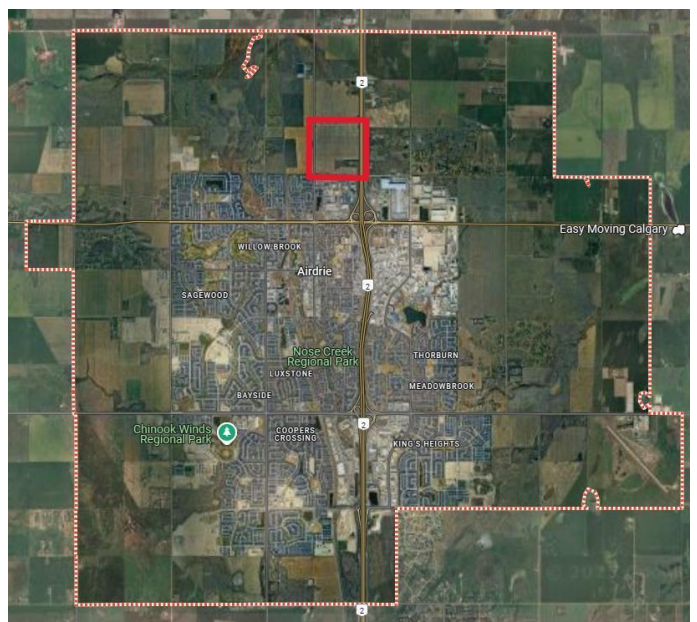
Prime Airdrie commercial/industrial land for lease. QEII frontage, highway exposure. Very accessible from Dickson Stevenson Trail or Range Rd 10 NE. Directly adjacent to residential communities and commercial business hub. This rare lease offering is one of the few opportunities to establish your business on a major highway within the City of Airdrie. Minimum 10 Acres flexible lot sizes, with up to 147 Acres available. \$1.00 per sq. ft. includes stripping, grading, electrical service, and road access to lot as required. Gravel and fencing at additional cost negotiable. Minimum 3 year term. Discretionary Interim land uses identified by the City of Airdrie.

Essential Information

MLS® #	A2218751
Price	\$1
Bathrooms	0.00
Acres	147.00
Type	Land
Sub-Type	Industrial Land
Status	Active

Community Information

Address	272256 Dickson Stevenson Trail Ne
Subdivision	NONE
City	Airdrie



County	Airdrie
Province	Alberta
Postal Code	T4B4T2

Amenities

Utilities	Electricity Available
-----------	-----------------------

Additional Information

Date Listed	June 6th, 2025
Days on Market	40
Zoning	Interim Commercial & Gene

Listing Details

Listing Office	LB Hubbard Realty Group
----------------	-------------------------

Data is supplied by Pillar 9â„¢ MLS® System. Pillar 9â„¢ is the owner of the copyright in its MLS® System. Data is deemed reliable but is not guaranteed accurate by Pillar 9â„¢. The trademarks MLS®, Multiple Listing Service® and the associated logos are owned by The Canadian Real Estate Association (CREA) and identify the quality of services provided by real estate professionals who are members of CREA. Used under license.