

# \$300,000 - 2108, 1888 Signature Park Sw, Calgary

MLS® #A2211692

**\$300,000**

2 Bedroom, 2.00 Bathroom, 943 sqft

Residential on 0.00 Acres

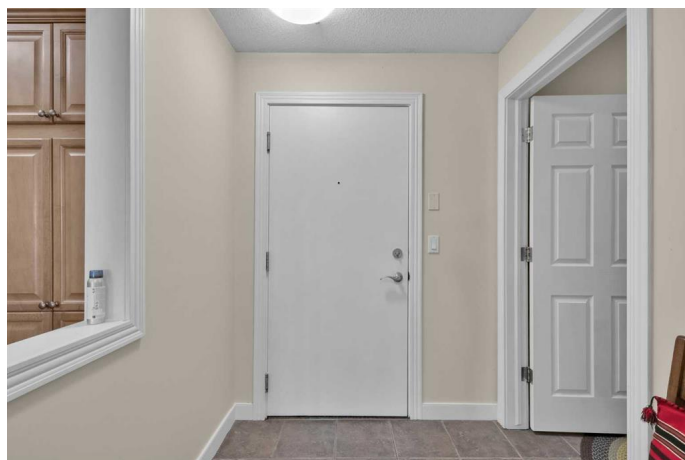
Signal Hill, Calgary, Alberta

An exceptional opportunity at this price point. This main floor condo has a great layout, many desirable features and is a **MUST SEE**. Over 940SF of living space, open concept kitchen, dining and living room, 2 bedrooms, 2 bath with convenient in-suite laundry & storage. Enjoy cooking in the large kitchen with tons of cabinets, pantry and raised eating bar. Living room with gas fireplace and access to your private patio with BBQ gas line. 2 generous size bedrooms including the primary with a walk-in closet and 4 piece ensuite. Enjoy the comforts of underground heated title underground parking, car wash, and a separate titled storage locker. C-train station access steps away as well as 2 plazas with numerous amenities. Newer carpet, freshly painted and move in ready. Call today to book your showing!

Built in 2003

## Essential Information

MLS® #	A2211692
Price	\$300,000
Bedrooms	2
Bathrooms	2.00
Full Baths	2
Square Footage	943
Acres	0.00
Year Built	2003



Type	Residential
Sub-Type	Apartment
Style	Single Level Unit
Status	Active

### Community Information

Address	2108, 1888 Signature Park Sw
Subdivision	Signal Hill
City	Calgary
County	Calgary
Province	Alberta
Postal Code	T3H4Z1

### Amenities

Amenities	Elevator(s), Visitor Parking, Car Wash, Secured Parking, Storage
Parking Spaces	1
Parking	Underground, Parkade

### Interior

Interior Features	Breakfast Bar, High Ceilings, Open Floorplan, Pantry, Storage
Appliances	Dishwasher, Dryer, Microwave Hood Fan, Refrigerator, Washer, Window Coverings, Electric Stove
Heating	Baseboard
Cooling	None
Fireplace	Yes
# of Fireplaces	1
Fireplaces	Gas, Mantle, Tile
# of Stories	3

### Exterior

Exterior Features	BBQ gas line
Construction	Stucco, Wood Frame, Stone

### Additional Information

Date Listed	April 15th, 2025
Days on Market	80
Zoning	M-C1

### Listing Details

Listing Office	2% Realty
----------------	-----------

Data is supplied by Pillar 9â„¢ MLS® System. Pillar 9â„¢ is the owner of the copyright in its MLS® System. Data is deemed reliable but is not guaranteed accurate by Pillar 9â„¢. The trademarks MLS®, Multiple Listing Service® and the associated logos are owned by The Canadian Real Estate Association (CREA) and identify the quality of services provided by real estate professionals who are members of CREA. Used under license.