

\$1,231,439 - 109, 1330 1st Avenue, Canmore

MLS® #A2209395

\$1,231,439

4 Bedroom, 4.00 Bathroom, 1,833 sqft

Residential on 0.00 Acres

Teepee Town, Canmore, Alberta

South facing townhome with amazing views!
Four bedrooms, garage, fenced yard & storage, community solar and EV rough in.
Located in Canmore's revitalizing Teepee Town neighborhood. Unit 109, 1,833 SF developed, premium finishing. Pricing for 13 units in the complex is available at [baldeaglepeakchalets website](#). Contact your Associate for a viewing. A listing agent is a shareholder of the seller.

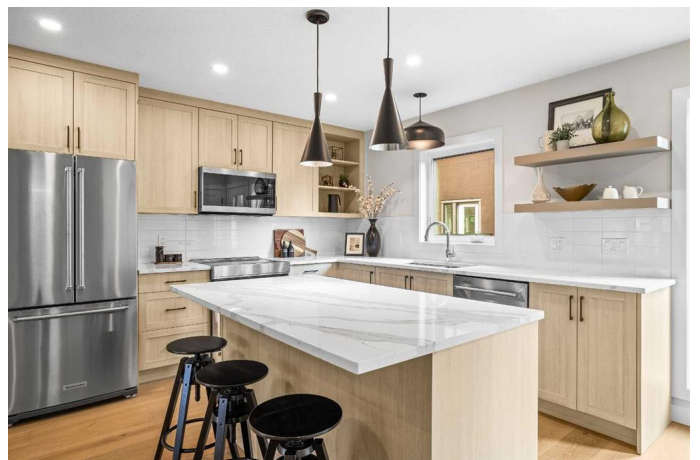
Built in 2025

Essential Information

MLS® #	A2209395
Price	\$1,231,439
Bedrooms	4
Bathrooms	4.00
Full Baths	3
Half Baths	1
Square Footage	1,833
Acres	0.00
Year Built	2025
Type	Residential
Sub-Type	Row/Townhouse
Style	3 Storey
Status	Active

Community Information

Address 109, 1330 1st Avenue



Subdivision	Teepee Town
City	Canmore
County	Bighorn No. 8, M.D. of
Province	Alberta
Postal Code	T1W 1M4

Amenities

Amenities	None
Parking Spaces	2
Parking	Single Garage Attached
# of Garages	1

Interior

Interior Features	Closet Organizers, Granite Counters, Kitchen Island, Wired for Data
Appliances	Electric Range, ENERGY STAR Qualified Dishwasher, Microwave Hood Fan, Refrigerator, Washer/Dryer Stacked
Heating	Boiler
Cooling	None
Fireplace	Yes
# of Fireplaces	1
Fireplaces	Gas
Basement	None

Exterior

Exterior Features	Balcony, Private Yard, Storage
Lot Description	Back Yard, Few Trees
Roof	Asphalt Shingle
Construction	Cement Fiber Board, Stucco, Wood Frame
Foundation	Poured Concrete

Additional Information

Date Listed	April 7th, 2025
Days on Market	60
Zoning	TPT-CR

Listing Details

Listing Office	MaxWell Capital Realty
----------------	------------------------

Data is supplied by Pillar 9â„¢ MLSÂ® System. Pillar 9â„¢ is the owner of the copyright in its MLSÂ® System. Data is deemed reliable but is not guaranteed accurate by Pillar 9â„¢. The trademarks MLSÂ®, Multiple Listing ServiceÂ® and the associated logos are owned by The Canadian Real Estate Association (CREA) and identify the quality of services

