

\$15 - 118, 1330 15 Avenue Sw, Calgary

MLS® #A2098901

\$15

0 Bedroom, 0.00 Bathroom,
Commercial on 0.00 Acres

Beltline, Calgary, Alberta

Rare find, Vacant, 408 sq. ft. & 745 sq. ft., 2nd Floor Office units within Wellington Square on busy 14 Street SW offered at below market rental rates. Other 2nd floor units , occupied by Month to Month Tenants and available with notice, 1,267 sq. ft., 1,298 sq. ft., 2,808 sq. ft. up to 4,075 sq. ft. contiguous. Double row front parking and 24 stalls in rear. Excellent main floor Tenant mix and built in draw from 12 floor residential condo building on site as well dense surrounding residential development.

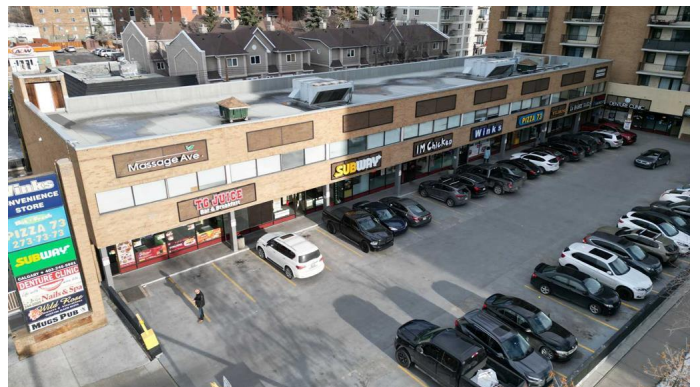
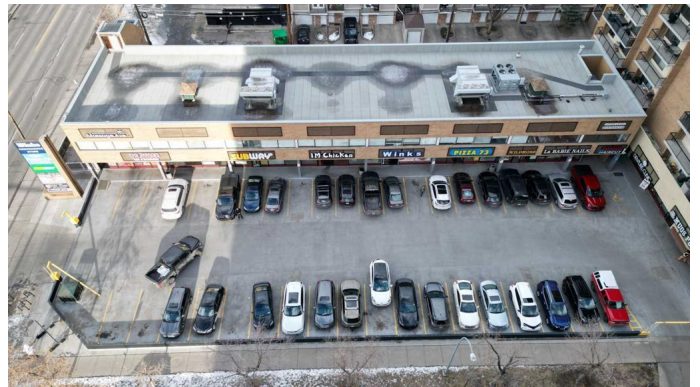
Built in 1973

Essential Information

MLS® #	A2098901
Price	\$15
Bathrooms	0.00
Acres	0.00
Year Built	1973
Type	Commercial
Sub-Type	Retail
Status	Active

Community Information

Address	118, 1330 15 Avenue Sw
Subdivision	Beltline
City	Calgary
County	Calgary
Province	Alberta
Postal Code	T3C 3N6



Amenities

Parking Spaces 80

Additional Information

Date Listed December 28th, 2023

Days on Market 555

Zoning CC-COR CENTRE CITY COMMER

Listing Details

Listing Office CENTURY 21 BAMBER REALTY LTD.

Data is supplied by Pillar 9â„¢ MLS® System. Pillar 9â„¢ is the owner of the copyright in its MLS® System. Data is deemed reliable but is not guaranteed accurate by Pillar 9â„¢. The trademarks MLS®, Multiple Listing Service® and the associated logos are owned by The Canadian Real Estate Association (CREA) and identify the quality of services provided by real estate professionals who are members of CREA. Used under license.