

\$100,000 - M.d. Of Rocky View 7410080, Rural Rocky View County

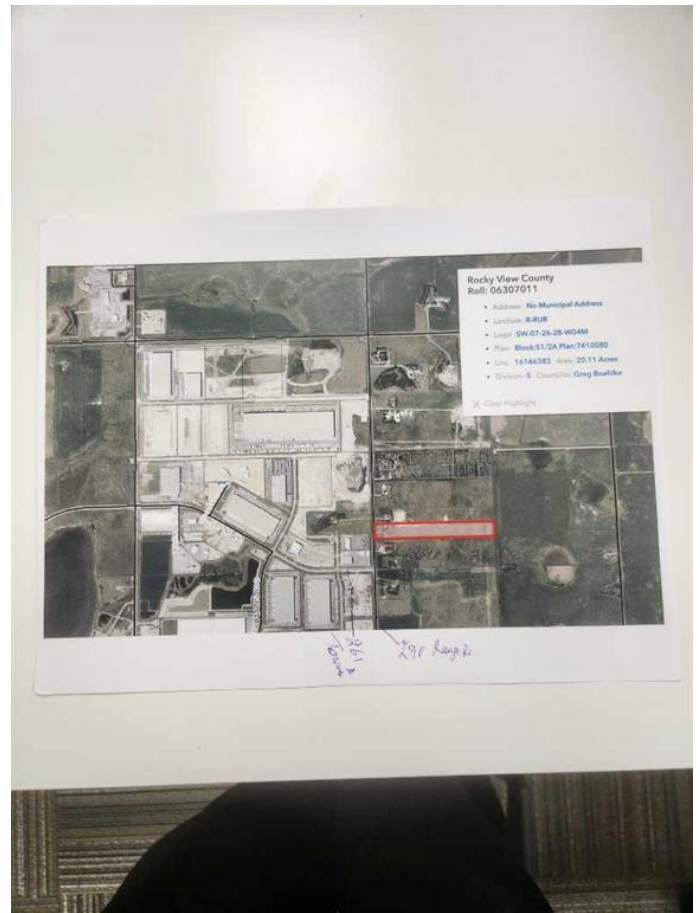
MLS® #A2088827

\$100,000

0 Bedroom, 0.00 Bathroom,
Land on 20.11 Acres

NONE, Rural Rocky View County, Alberta

IT IS 1/80 UNDIVIDED INTEREST IN THE LAND OF 20 ACRES SO TOTAL LAND IS 20 ACRES AND TOTAL SHARE HOLDERS ARE 80. ONLY ONE SHARE IS FOR SALE SO YOU ARE BUYING 1/4 ACRES OF LAND. LAND IS LOCATED VERY CLOSE TO TOWNSHIP RD 261 AND RANGE RD 290. JUST SOUTH OF THE OFFICE OF ROCKY VIEW COUNTY GOVERNMENT OFFICE.



Essential Information

| | |
|-----------|-----------------|
| MLS® # | A2088827 |
| Price | \$100,000 |
| Bathrooms | 0.00 |
| Acres | 20.11 |
| Type | Land |
| Sub-Type | Industrial Land |
| Status | Active |

Community Information

| | |
|-------------|----------------------------|
| Address | M.d. Of Rocky View 7410080 |
| Subdivision | NONE |
| City | Rural Rocky View County |
| County | Rocky View County |
| Province | Alberta |
| Postal Code | T0M 0E0 |

Additional Information

| | |
|----------------|--------------------|
| Date Listed | October 20th, 2023 |
| Days on Market | 609 |
| Zoning | r-rur |

Listing Details

| | |
|----------------|--------------------|
| Listing Office | Royal LePage METRO |
|----------------|--------------------|

Data is supplied by Pillar 9â„¢ MLS® System. Pillar 9â„¢ is the owner of the copyright in its MLS® System. Data is deemed reliable but is not guaranteed accurate by Pillar 9â„¢. The trademarks MLS®, Multiple Listing Service® and the associated logos are owned by The Canadian Real Estate Association (CREA) and identify the quality of services provided by real estate professionals who are members of CREA. Used under license.